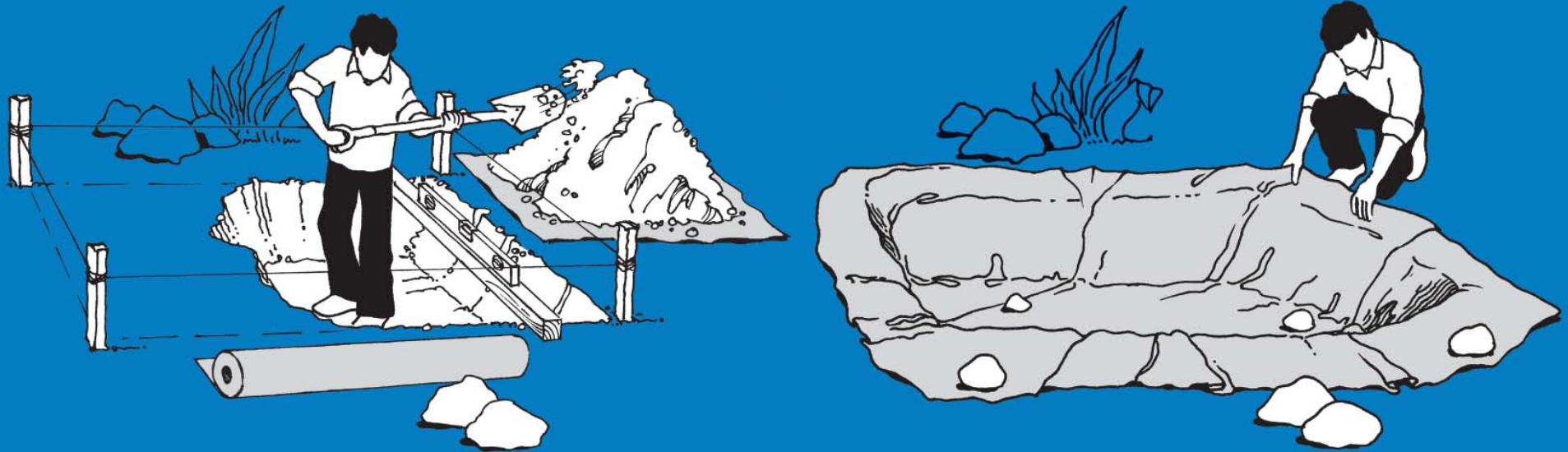


2×5 m



GB Membrane for ponds

- 1**
 - Mark up the form of the pond on the ground.
 - Dig out the pond. Do not make the sides too steep.
 - To hide the edges of the foil, make for instance a plant shelf for stones or plants 10 cm below the top of the pond.
- 2**
 - The edges of the pond should all have the same height.
 - Level the edges. Use for instance a long, even board and a spirit level.
 - Clear the bottom and the sides of the pond for roots and stones.
- 3**
 - Unroll **AquaSafe** and make sure it is flush with the bottom and the sides. Overlap lanes with 20 cm.
 - Fasten **AquaSafe** with big stones along the edges.
 - Follow the instructions from the foil producer for building the rest of the pond.